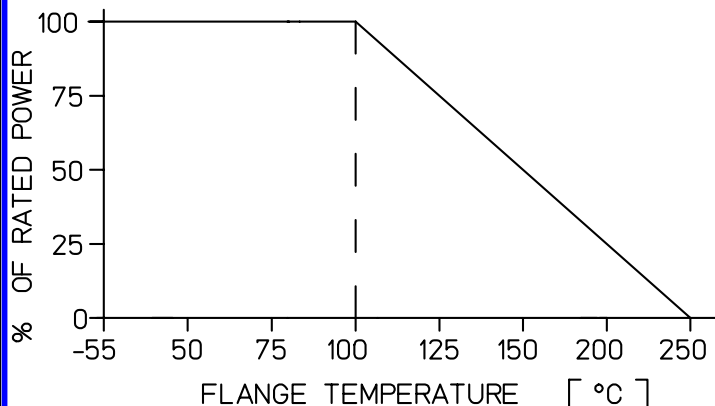


POWER DERATING



NOTES:

- 1) RoHS COMPLIANT
- 2) EPOXY PROTECTIVE COAT
- 3) Ni/Ag PLATED
- 4) THICK FILM RESISTIVE ELEMENT

MI DRG. NO.

AL150A03029-001B

REV.

**AL150A03029-001**

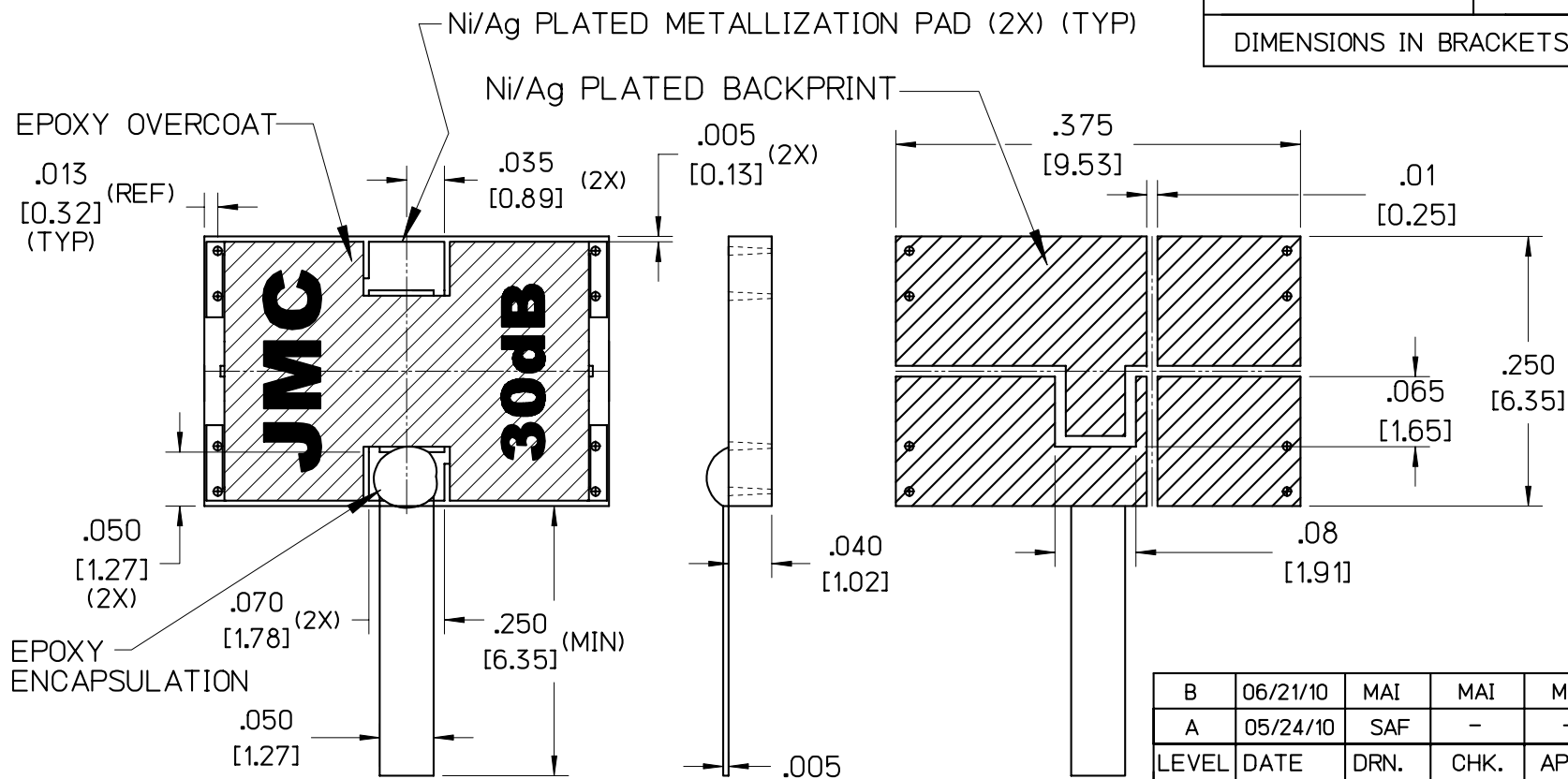
**B**

**HIGH POWER ALN  
ATTENUATOR W/TAB**

SPECIFICATIONS

FILE: ATNOUT

POWER MAX (WATTS):	150 CW
ATTENUATION	30dB (±0.5dB)
FREQUENCY	VSWR
DC - 3000 MHz	1.2 : 1
DIMENSIONS IN BRACKETS ARE [mm]	



B	06/21/10	MAI	MAI	MAI	000848
A	05/24/10	SAF	-	-	000835
LEVEL	DATE	DRN.	CHK.	APP.	ECN

REVISIONS

DRN.	CHK.	APP.	SCALE
SAF	MAI	MAI	6" = 1"
DATE	DATE	DATE	.XX ± .015
05/24/10	05/24/10	05/24/10	.XXX ± .005



**JOHANSON MANUFACTURING CORPORATION**

ROCKAWAY VALLEY ROAD, BOONTON, N.J. 07005 (973)334-2676 FAX (973)334-2954  
ELECTRONIC ACCURACY THROUGH MECHANICAL PRECISION

PROPRIETARY INFORMATION CONTAINED NOT TO BE USED WITHOUT JOHANSON MANUFACTURING CORPORATION APPROVAL